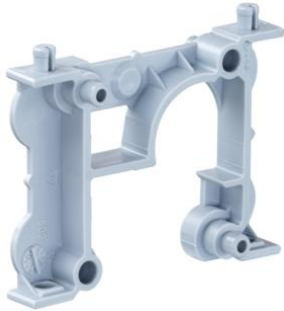


10–100 mm extension element



Extension element 10 to 50 mm

- for fitting of overhead one-gang junction boxes at greater heights
- can be attached to one-gang junction boxes or abutment using push-stud conduit connector

Order number:	1261-10
EAN:	4013456151031
Installation heights, horizontal	10 mm
Installation heights, vertical	50 mm
Dispatch	50

Extension element for bridging wall thicknesses and supporting one-gang boxes during installation on the opposing formwork. Bridging of up to 100 mm (plus box dimensions) can be underpinned securely in increments of 10 or 50 mm.

- For installation of overhead one-gang junction boxes
- Fitting height: vertical 50 mm, horizontal 10 mm
- can be attached to one-gang junction boxes or abutment using push-stud conduit connector
- Clip the connector into place, insert the conduit into the connector.

